

Kansas Infant Mortality Rates (IMR) per 1,000 Live Births by County of Residence, 2008-2012



IMR ■ 0.0 ■ 0.1 - 6.0 ■ 6.1 - 18.1

Kansas = 6.6
Healthy People 2020 Target = 6.0

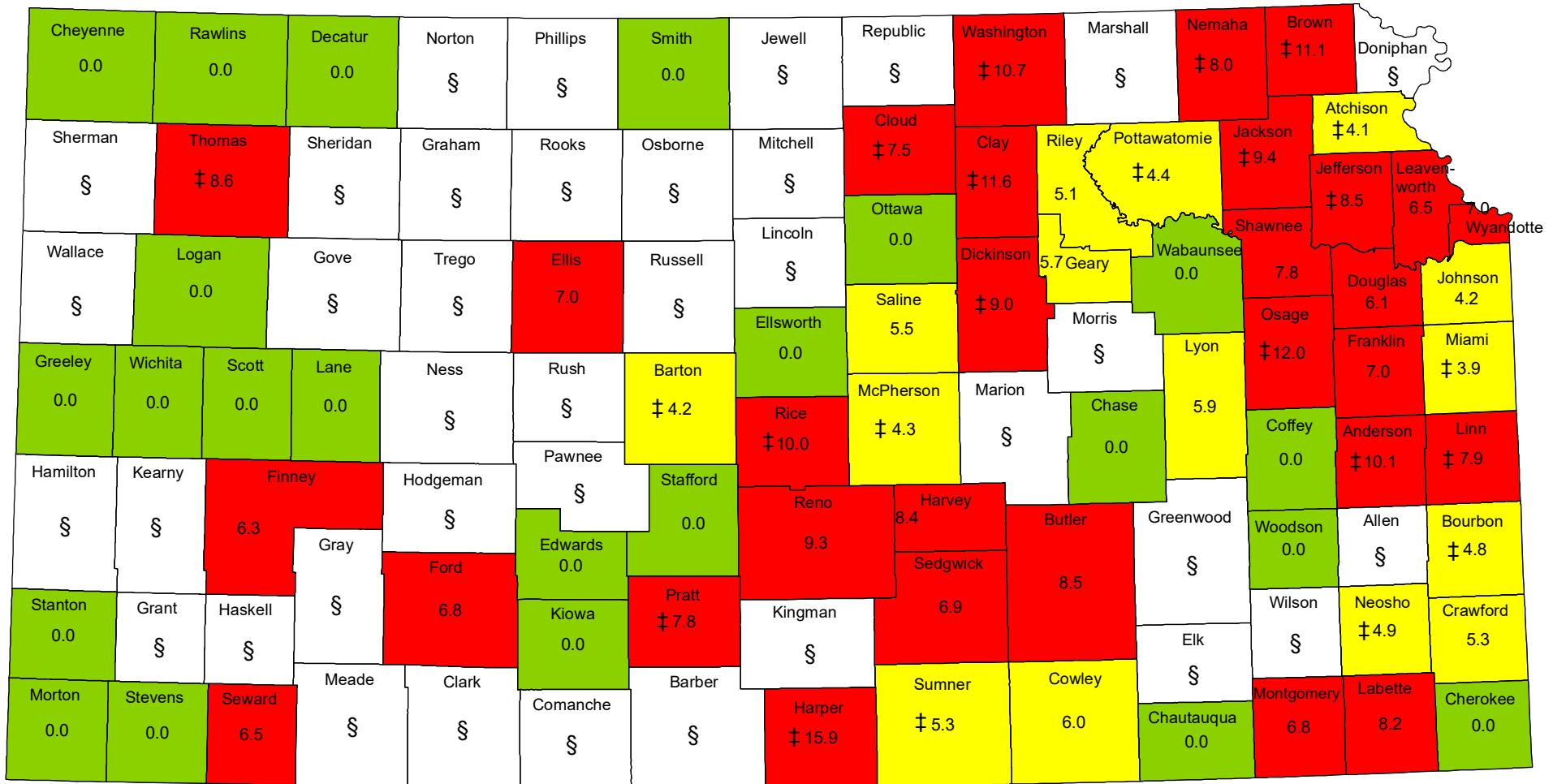
RSE (Relative Standard Error): Defined as the estimate divided by its standard error, RSE is an indicator for statistical reliability.

‡ Estimates have a RSE greater than 30% and less than or equal to 50% and should be used with caution as they do not meet the standard of reliability or precision.

§ Estimates with a RSE or greater than 50% are replaced with a § and are suppressed.

Source: Kansas Department of Health and Environment, Bureau of Epidemiology and Public Health Informatics. Kansas birth and death data (resident), 2008-2012.

Kansas Infant Mortality Rates (IMR) per 1,000 Live Births by County of Residence, 2013-2017



IMR ■ 0.0 ■ 0.1 - 6.0 ■ 6.1 - 15.9

Kansas = 6.1
Healthy People 2020 Target = 6.0

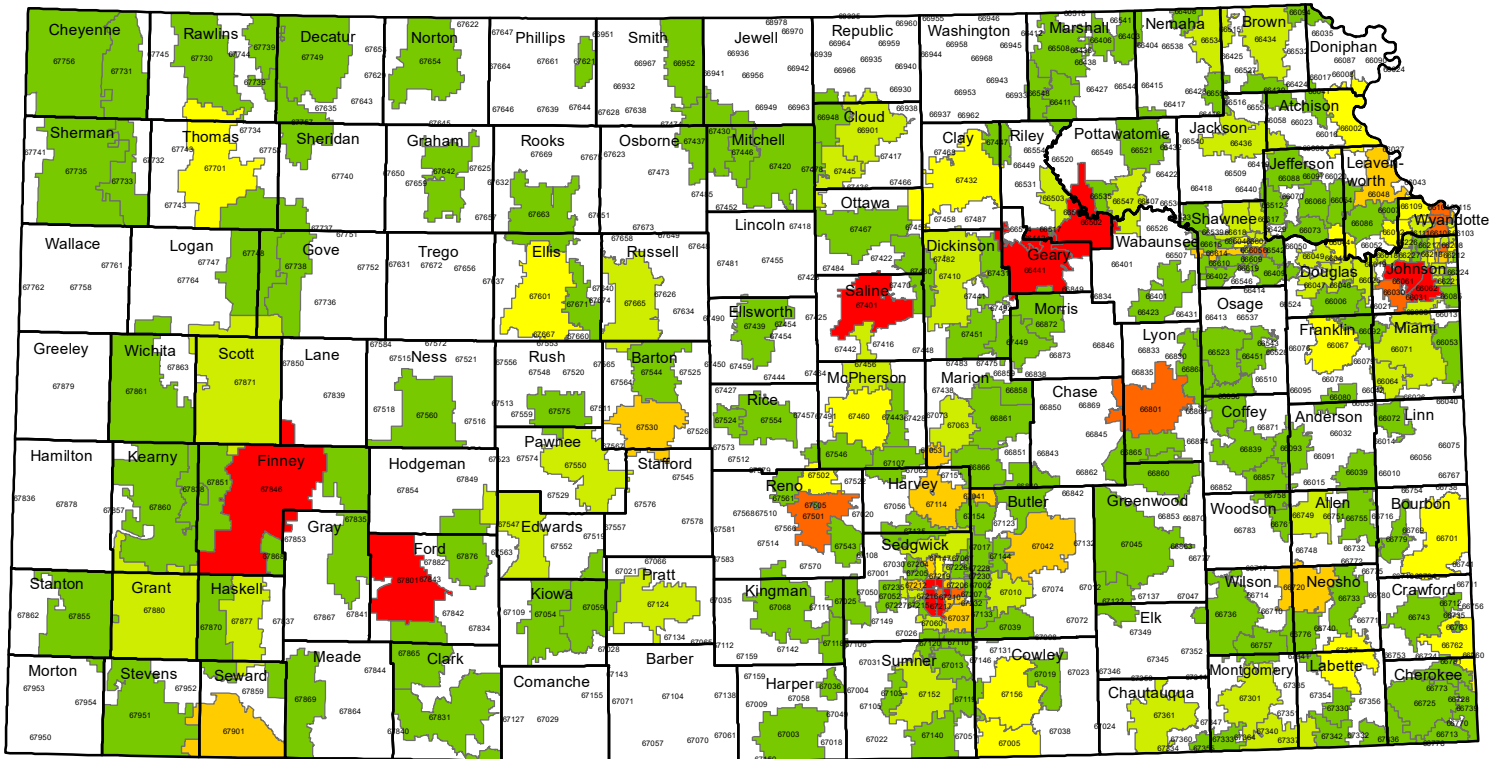
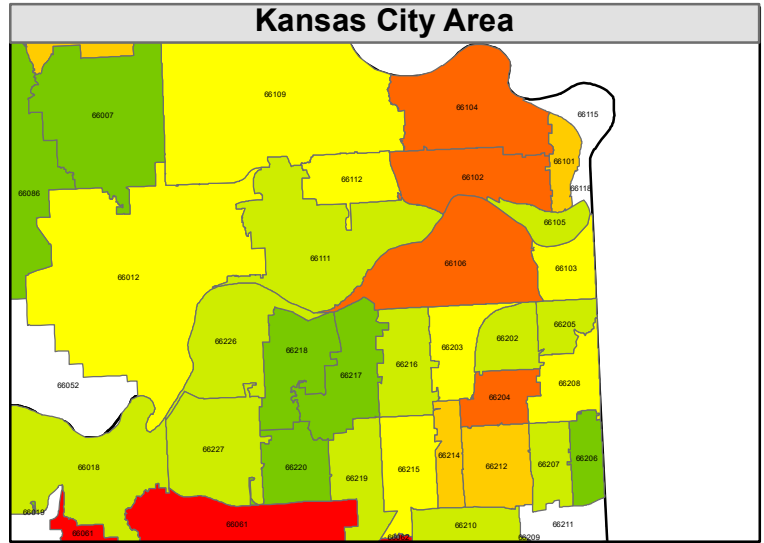
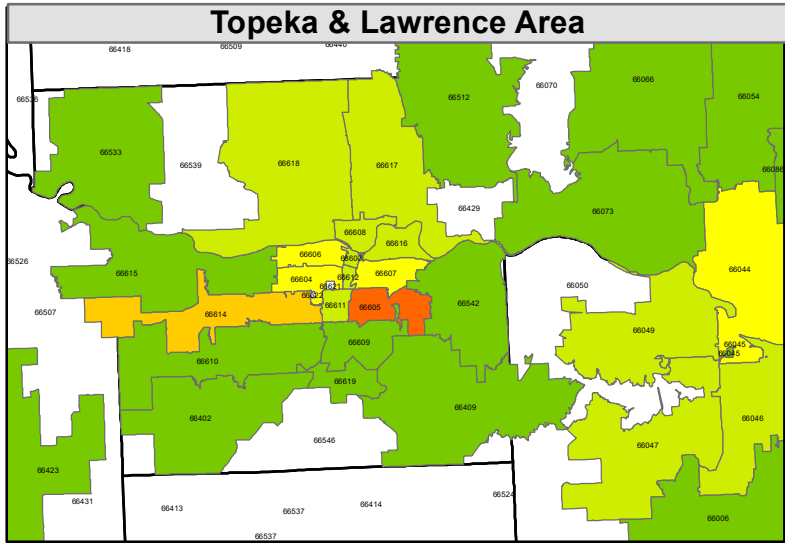
RSE (Relative Standard Error): Defined as the estimate divided by its standard error, RSE is an indicator for statistical reliability.

‡ Estimates have a RSE greater than 30% and less than or equal to 50% and should be used with caution as they do not meet the standard of reliability or precision.

§ Estimates with a RSE or greater than 50% are replaced with a § and are suppressed.

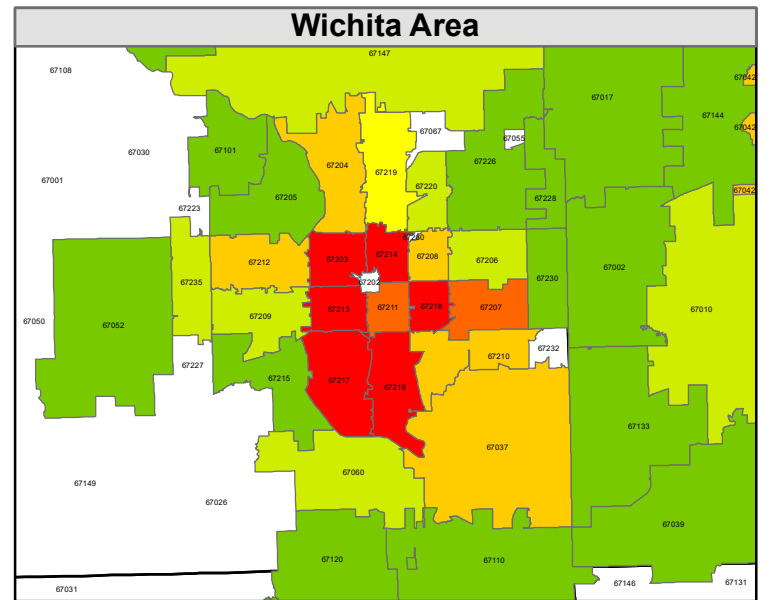
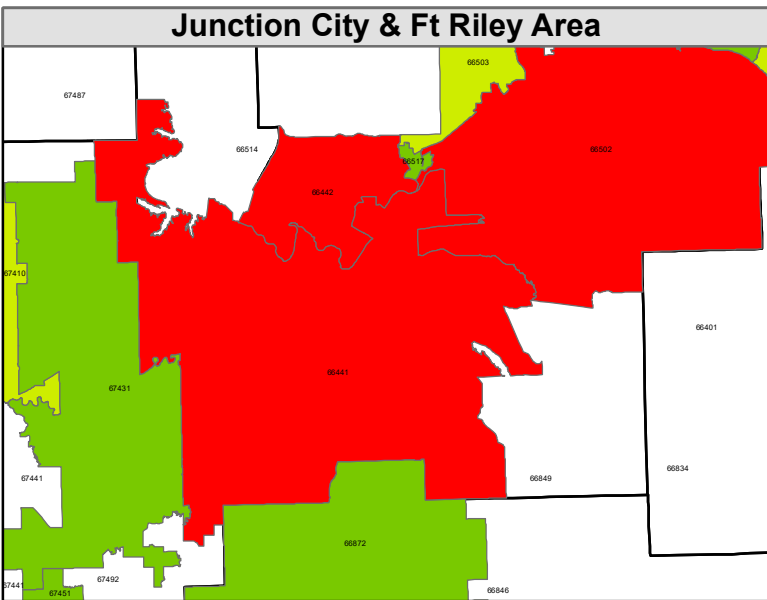
Source: Kansas Department of Health and Environment, Bureau of Epidemiology and Public Health Informatics. Kansas birth and death data (resident), 2013-2017.

Kansas Infant Mortality by ZIP code, 2008-2012

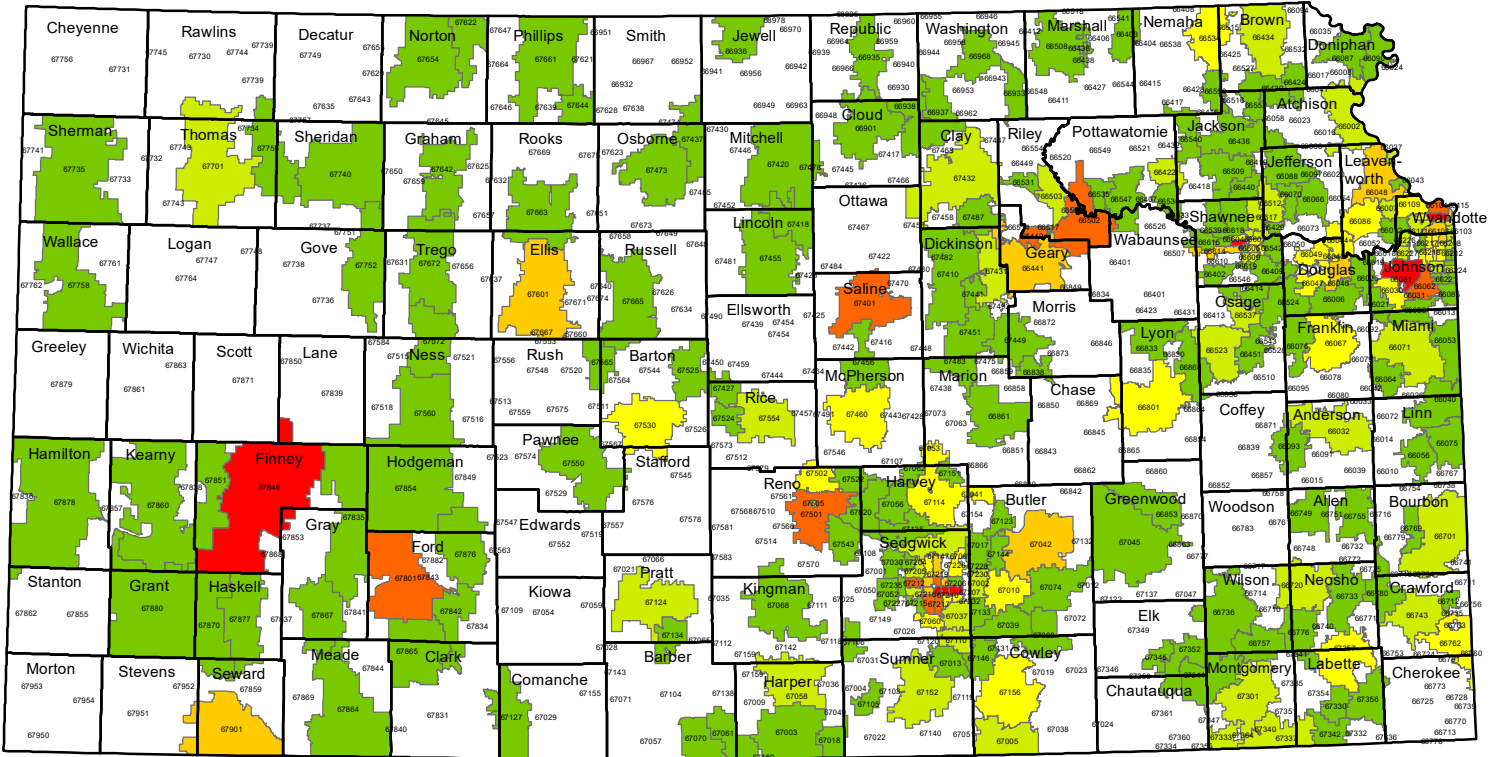
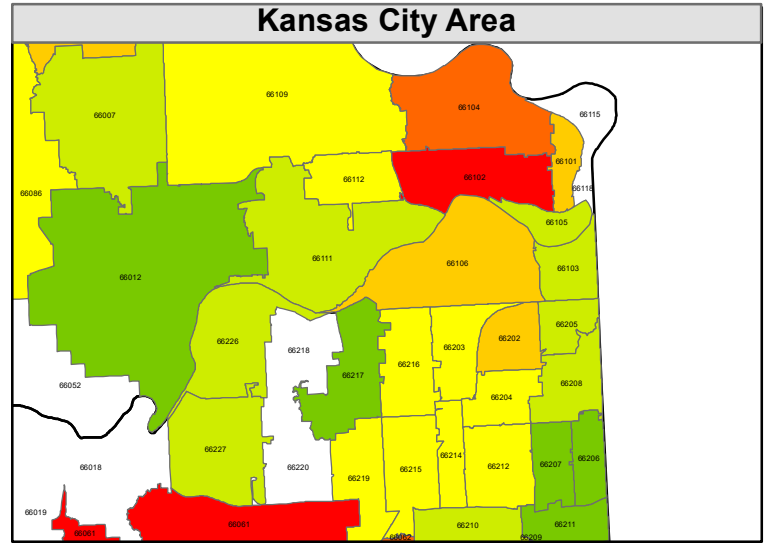
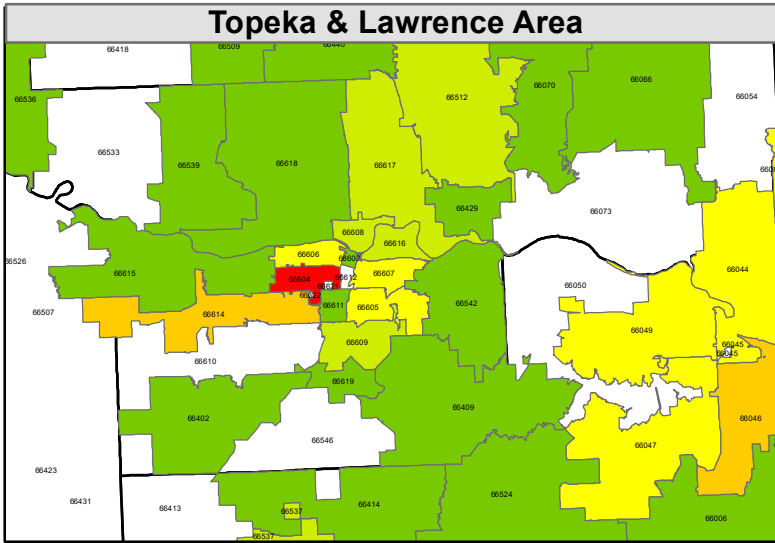


Total mortality number ■ 1 - 2 ■ 3 - 5 ■ 6 - 10 ■ 11 - 15 ■ 16 - 20 ■ Over 21

Source: Bureau of Epidemiology and Public Health Informatics. Kansas death data (resident), 2008-2012.



Kansas Infant Mortality by ZIP code, 2013-2017



Total mortality number ■ 1 - 2 ■ 3 - 5 ■ 6 - 10 ■ 11 - 15 ■ 16 - 20 ■ Over 21

Source: Bureau of Epidemiology and Public Health Informatics. Kansas death data (resident), 2013-2017.

